

SMS MAIL

PROGRAM FOR SMS SERVER of BlueGate or
MiniGate



User guide v3.0.4.79

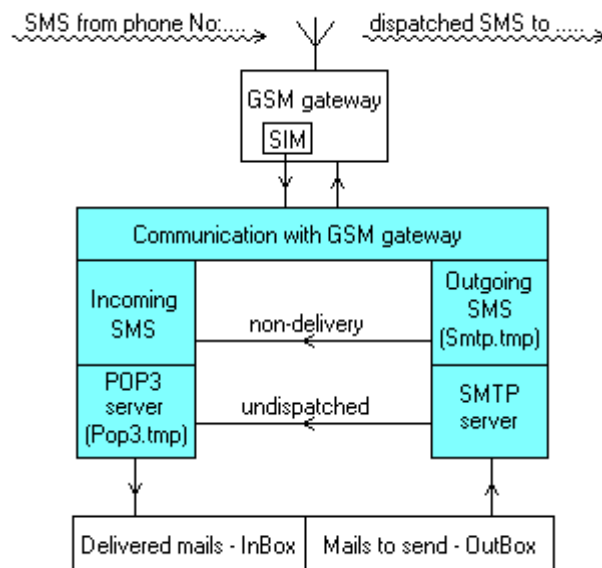
Content

Object of program and brief description of its functioning.....	3
Block schema of information processing.....	3
Program installation.....	4
Communication between program and GSM gate.....	4
Registration – transfer from DEMO version to full version.....	5
Program states signalization.....	5
Main window of the program and basic setting.....	6
Setting of new account for cooperation with SMS-Mail.....	7
Sending and receipt of SMS messages.....	8
Simple sending of SMS message without e-mail client.....	9
Check of file buffer with received messages, prepared for mail clients.....	9
Check of mail clients activity.....	10
Transfer of e-mail into SMS message	11
E-mail is too long for transfer into one SMS message.....	11
E-mail does not contain characters reliably readable in mobile phone.....	11
E-mail must be sent as SMS in pre-set time.....	12
Reception of SMS messages by e-mail clients.....	12
Specification of recipients to whom SMS messages will be released.....	12
Sending of SMS messages selectively to a defined computer in the net.....	13
Aliases as substitution of PC names in local net.....	13
Evaluation of correct program functioning.....	13

Object of program and brief description of its functioning

- Program can be used for transfer of SMS messages using GSM data gates (both with analog port and RS-GATE module and with ISDN port and REM module). In addition it can be used with Mini Gate A and Blue Gate SIP.
- Incoming SMS messages are transformed in order to be accepted as an ordinary e-mail by usual programs for emails (Outlook, Outlook Express, etc.). Similarly, outgoing e-mail messages are converted by the program into SMS messages and are sent to the connected gate.
- It is possible to route delivering of SMS to the particular PC by writing of the relevant name of PC in the net on the beginning of SMS. Usual SMS messages can be read using all PCs that have created necessary account within the net.
- Telephone numbers for SMS are entered in a form compatible with e-mail ones – it is possible to save them into directory as other e-mail addresses.
- The program works in batches. In pre-set time intervals, it withdraws SMSs collected in the gate and sends SMSs collected in PC by the gate.
- Program is possible to use both for one PC and for PC as SMS server working with several PCs. It can be run e.g. as service in regime without interaction with display and keyboard .
- E-mails converted to SMSs are saved by the program in PC. If the gate is not connected or is occupied by a call, SMSs are waiting for successful connection of the gate.

Block schema of information processing



Program installation

Install the program in the PC physically connected to the gate. Blue Gate ISDN is connected through serial port, Mini Gate A is connected through USB and virtual serial port and Blue Gate SIP is connected through ethernet. Program is always installed as a DEMO version and only after entering the relevant registration code (see bellow) the program is converted into an unlimited version.

DEMO version limitations:

The only limitation is reduction of a length of transferred SMS messages to 10 characters after which advertisement text is added.



Installation:

1. Run SMS_Mail_Setup.exe.
2. Choose option – New installation.
3. Validate license agreement, select name of installation folder and folder of programs in Windows./ Start / All programs.
4. You can enter also GSM port and the key for IMEI of GSM gate. However, these options are accessible also after installation.

Communication between program and GSM gate

After installation, run the program and set parameters of communication between GSM gate and the program:

- Select type of GSM gate with which the program will communicate
- According to GSM gate type, the communication proceeds through serial port COM, USB port and virtual COM port or TCP-IP.
- Some parameters of data transfer will be preset by selection of GSM gate type.
- Further, select relevant COM port or IP address of GSM gate.

Data exchange between GSM gate and the program proceeds repeatedly in batches.

- Time interval of batch processing is given in minutes.
- Size of interval is convenient to select according to gate workload.
- In case of heavy workload of SMSs and low workload of voice communication, select short interval and on contrary in case of heavy workload of voice communication, select long interval (GSM module is occupied for calls during communication with the program.)
- **Attention! The gate will always stay for half of minute after end of data communication in data regime and thus it will be occupied for calls.**
- Regime “on line” is not fully compatible with normal telephone traffic through the GSM gate.

Note:

- If the program will operate continuously (e.g. as a server for several PCs) it is convenient to run it after PC start. Therefore place program short cut to the directory „Run after start“ and set its running in a minimized form in program features. In the program itself, set automatic start of batch processing after program start.
- Protocol TCP/IP is necessary for program functioning. If this protocol is not installed in your PC, please first, install it.

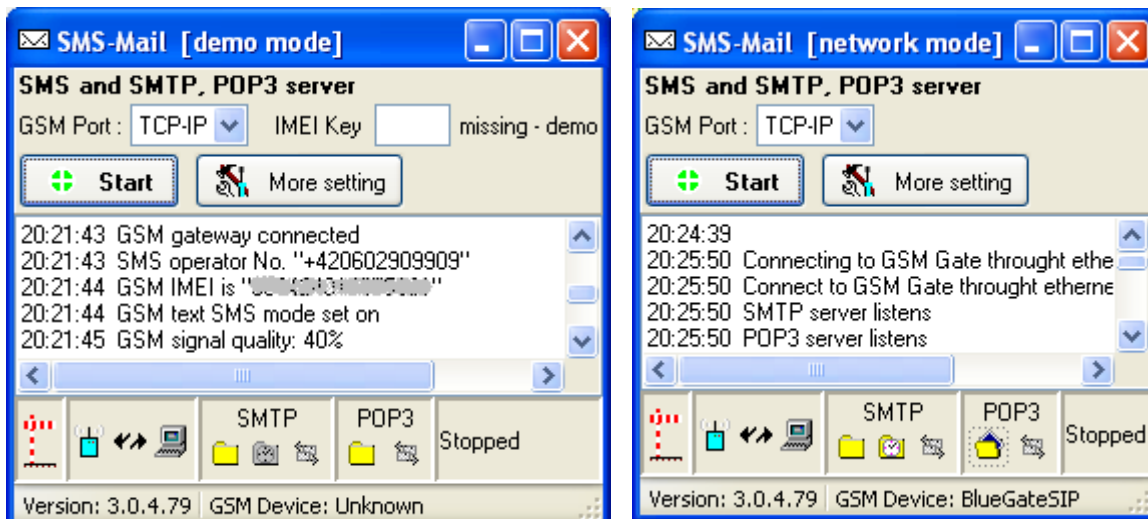
Registration – transfer from DEMO version to full version

After program start by pushing Start button, there are continuously written out actions that are executed in cooperation with program (receipt and dispatch of SMS by the gate, receipt and dispatch of e-mails to individual clients, signal intensity etc.) in the program window. First action of SMS server after start is checking of IMEI code of first GSM module of the gate. This code is necessary for gaining of registration code required for operation of program as full version. IMEI code should be sent to your distributor. After that, you will gain the code that you enter to the relevant cell of the program.

Note: The code in question to IMEI can be already enclosed to the gate with the program by a distributor.

Attention! This code is connected with IMEI of first GSM module of the gate. It will work as full version only with this gate. If the program is used with a different gate (first GSM module of the gate has the different IMEI!), the program will work as DEMO version.

After entering of valid registration code, the registration cell disappears:






Actual program state is displayed in the name of main window. IMEI is always read and displayed after connecting to the GSM gate. If IMEI, which does not correspond to the key, is read then the program is switched to DEMO regime and editor for entering a key will reappear.



Program states signalization

Periodical connecting on , off .

States in course of communication:

disconnected , connected , communication established 

error during communication 

Reading of SMS messages , writing of SMS messages 

States of SMTP and POP3 servers:

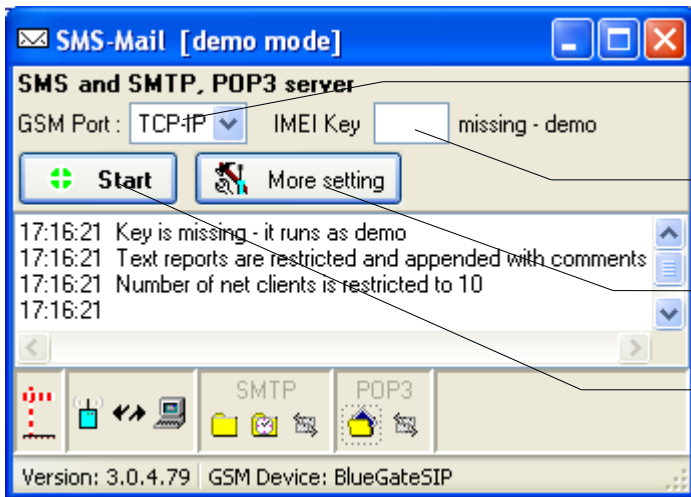
server running unsuccessful – „gray text“

server connected and is listening – „black text“

data are not in the reservoir , data are in the reservoir 

client is not connected , client is connected 

Main window of the program and basic setting



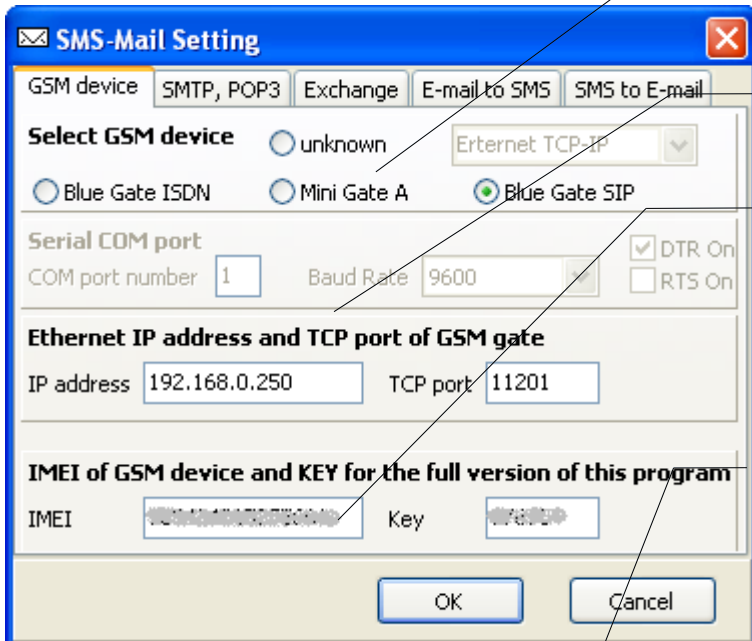
Interface for connection to GSM gate

Cell for entering registration key relevant to IMEI

Other possibilities of program settings

Start and stop of batch processing

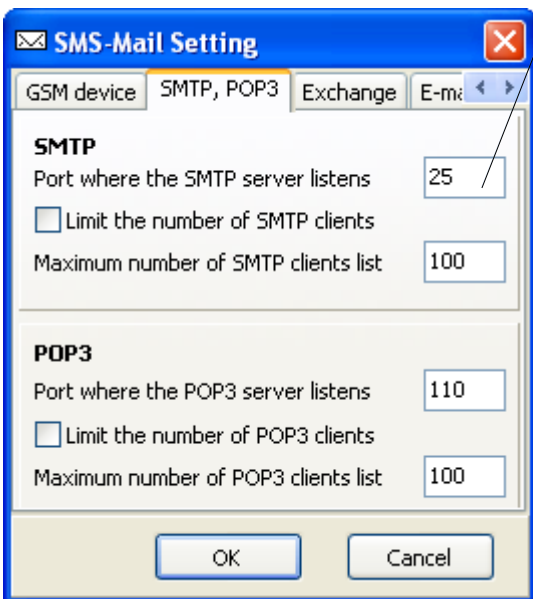
GSM gate selection



Setting of parameters for data transfer

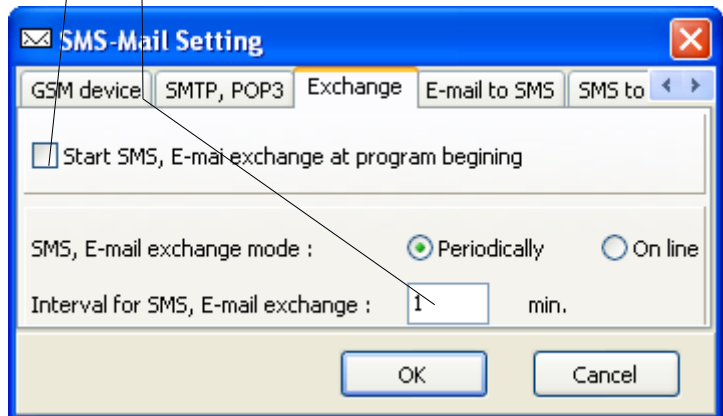
Editor for copy of IMEI of GSM gate

Setting of ports of SMTP and POP3 servers



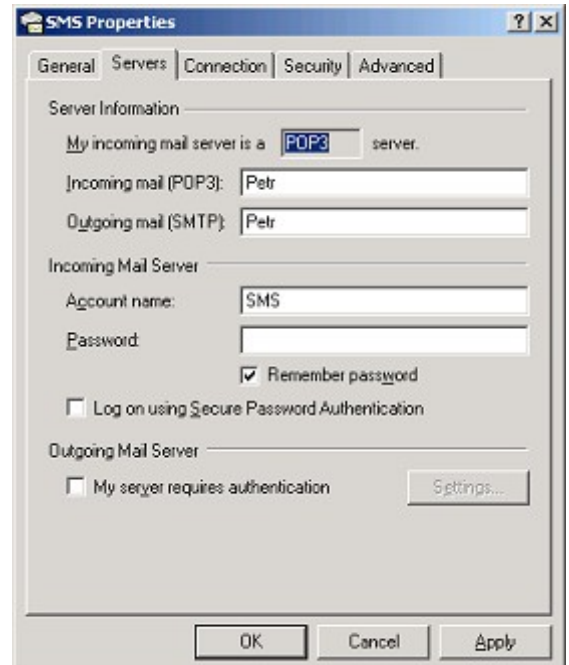
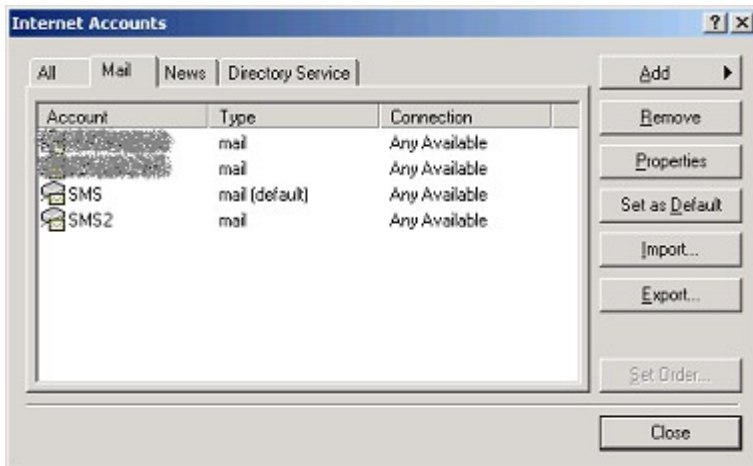
Automatic start of batch processing immediately after program start

Interval of batch processing



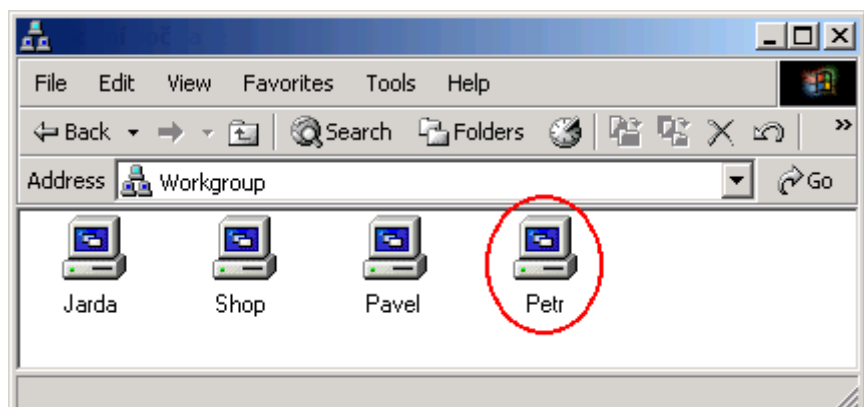
Setting of new account for cooperation with SMS-Mail.

It is necessary to set an account for cooperation with SMS-Mail in a program for e-mails (Outlook etc) in all PCs, from which you wish to send and receive SMS messages (i.e. even in PC to which GSM gate is connected – the only exception is the case when PC works only as a server).



Example is for Outlook 2000:

1. Run Outlook 2000 and add a new account in the tool for work with accounts
2. Select successively :--- Tools --- Accounts --- Add --- Mail
3. Create a new account with these parameters:
 1. Enter an account name regarding that it should be obvious that it serves for SMS sending (in the example "SMS")
 2. Fill in the name, under which the PC with installed SMS-Mail is registered in a local net (in the example Petr), to address fields of both „Incoming mail (POP3)“ and „Outgoing mail (SMTP)“
 3. Choose "Connection using local net (LAN)"



Note:

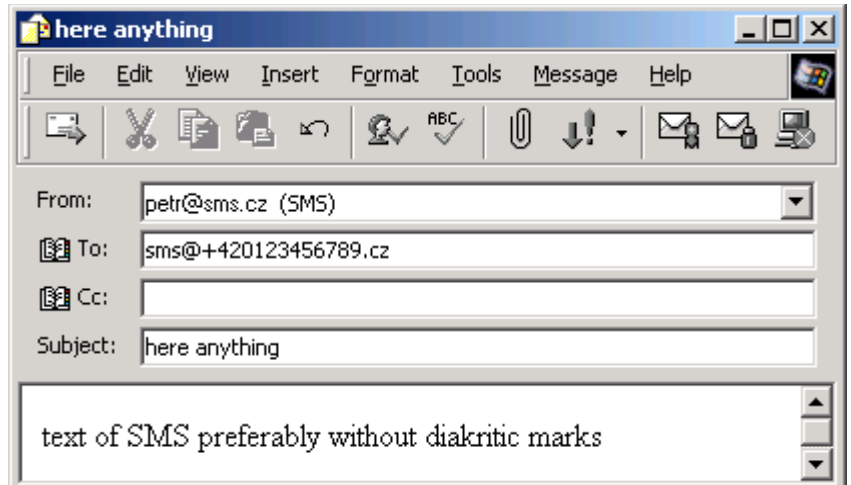
- Your e-mail address can be in any form.
- If you have any difficulties with account creating, please use help of the given e-mail program.

Please, check whether the added account exists in all computers collaborating with SMS-Mail program.

Sending and receipt of SMS messages

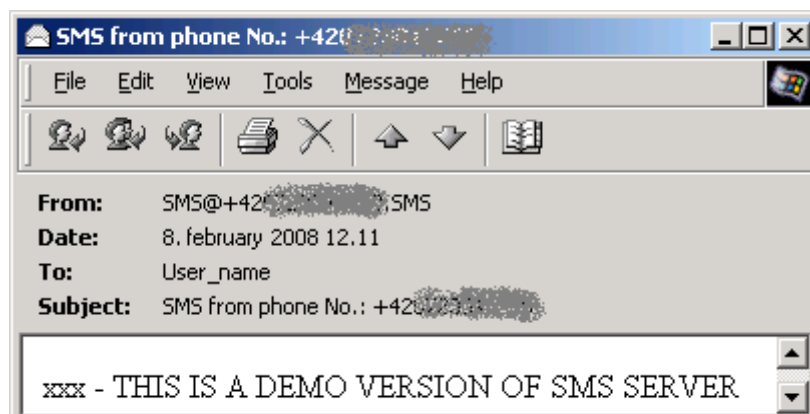
Sending:

- Write SMS as an usual e-mail. The length must not exceed that of one SMS message. If this condition is not fulfilled, the e-mail will be returned by SMS-Mail with an error message or split into more SMSs according to program setting.
- Address field “To” should be filled with address in the form: sms@+xxxxxxxxxxxxx.yyy, where +xxxxxxx is a number in an international form, yyy is any termination which is added because of syntax compliance (in case of some e-mail programs, this is not necessary, because these programs do not check syntax).
- The same text is possible to send to more clients by using copy or entering more addresses.
- The cell “Subject” is not passed to SMS – therefore anything, what enables a message identification, can be here.
- Please send e-mail by newly created account (in the example SMS – the way of account selection is different in particular programs, please follow the help – on the picture there is an option for Outlook Express)



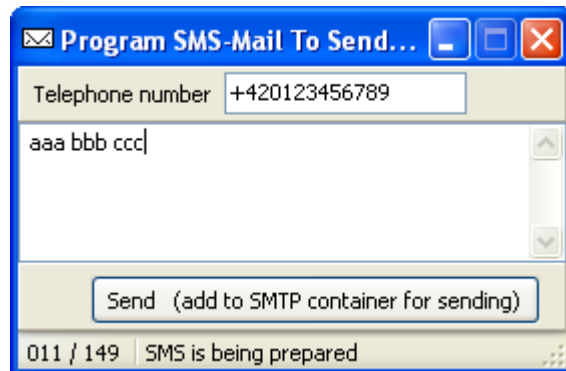
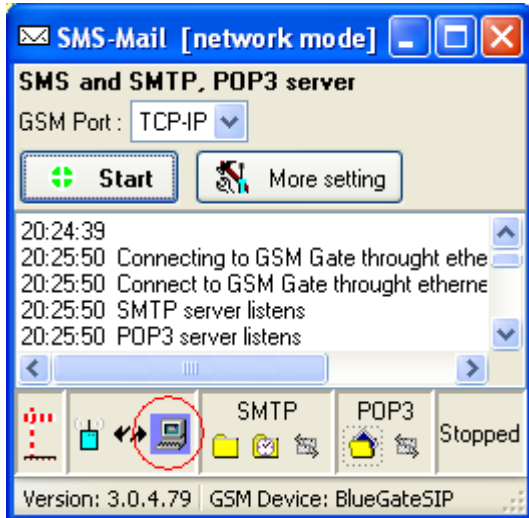
Receipt:

- Received SMS is in a standard e-mail format
- In the cell “From”, there is shown a telephone number of a sender in the already mentioned form. The number is shown in the same form as in the subject of the message.
- The mentioned form of SMS number enables both use for answering by a button „Reply“, where it appears in a correct form for sending, and direct saving to a directory to other email addresses. Thus, it is possible to select SMS numbers in similar way as other e-mail addresses from the directory.
- Sending and receipt of SMS messages will proceed according to setting of e-mail program either immediately or after pressing the button „Send/Recv“ or in pre-set periods (more details in help of the used program).



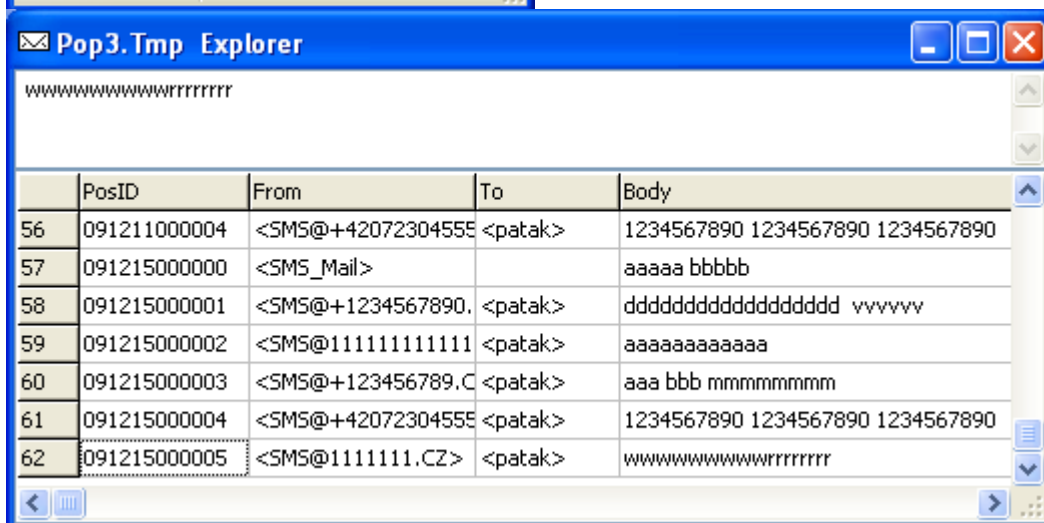
Simple sending of SMS message without e-mail client

It is possible to use for testing of the program functioning independently on functioning of mail SMTP clients.

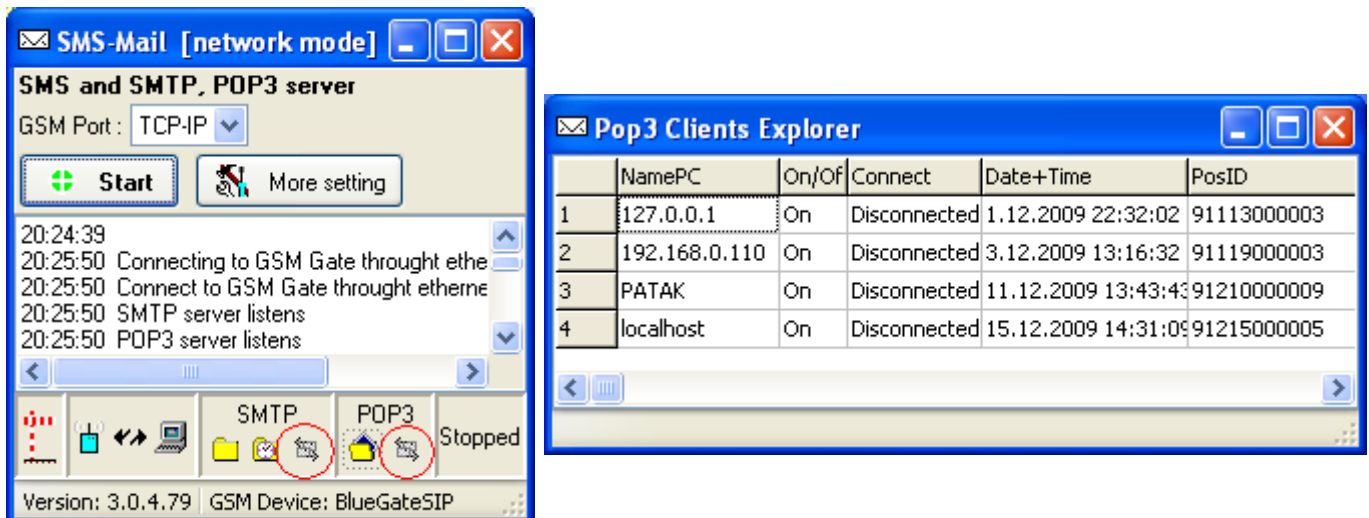


Check of file buffer with received messages, prepared for mail clients

It is possible to use for check of received messages before their transfer to mail POP3 clients



Check of mail clients activity



Activities of individual SMTP or POP3 clients can be followed and set by windows „Clients Explorer“.

By click on client line by right mouse button, it is possible to:

- delete – e.g. After long idle (column Date+Time)
- switch off – to deny access to SMTP or POP3 server of SMS_Mail for client
- disconnect – if client is connected for long time and data are not transferred

Clients are identified according to name of PC in which their mail client is running. It is possible to switch on regime where only IP addresses of PCs are used.

In the column Date+Time, there is time of last client connection.

New or deleted client is added to table automatically.

If number of clients is limited and new client overflows limit of allowed clients, this client will be switched off immediately after addition.

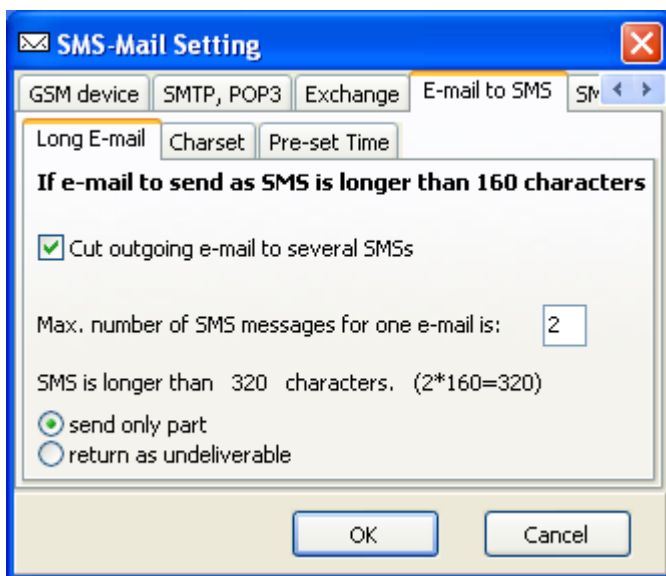
The communication proceeds through TCP-IP on ports 25 and 110. However, it can be necessary to use other ports than standard ones sometimes. For example, when services IIS are running in a computer with SMS-Mail program. It is recommended to set a port to any free value in range from 1024 to 49151. In case of using a nonstandard port, it is necessary to set this port to all clients, too.

Preferably, such settings should be performed by a system administrator that has an access to settings of users competences, setting of antivirus programs, firewalls etc.

Transfer of e-mail into SMS message

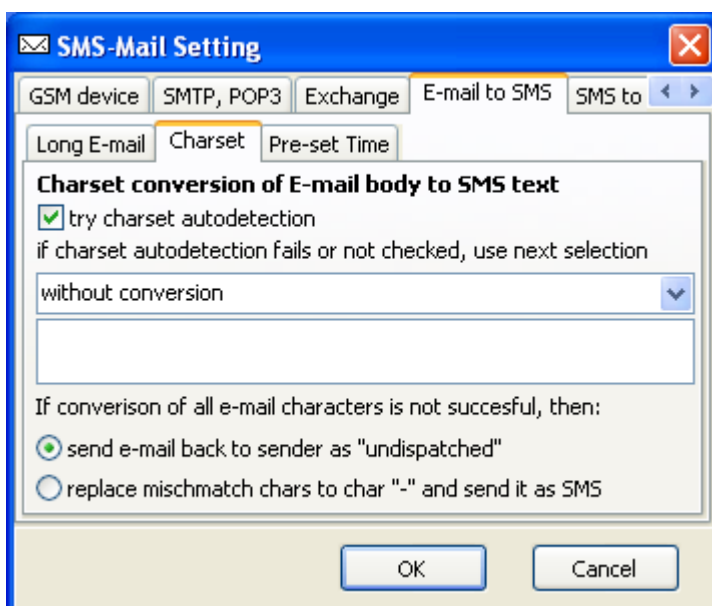
- It is necessary to adjust text of e-mail in order to be sent as SMS message regarding its length and text simplicity, without supplements and pictures.
- If e-mail is sent in more copies, program SMS_Mail will try to send SMSs to all telephone numbers given in e-mail addresses.
- If the program SMS_Mail assesses a received e-mail as untransferable to SMS message, it will return it to sender with flag „undispatched“.
- If you send e-mail to a nonexistent number, it will be returned to sender with flag „non-delivery“.

E-mail is too long for transfer into one SMS message



This can be solved in dependence on relevant setting. E-mail can be shortened, splitted into more SMS messages or returned to sender.

E-mail does not contain characters reliably readable in mobile phone

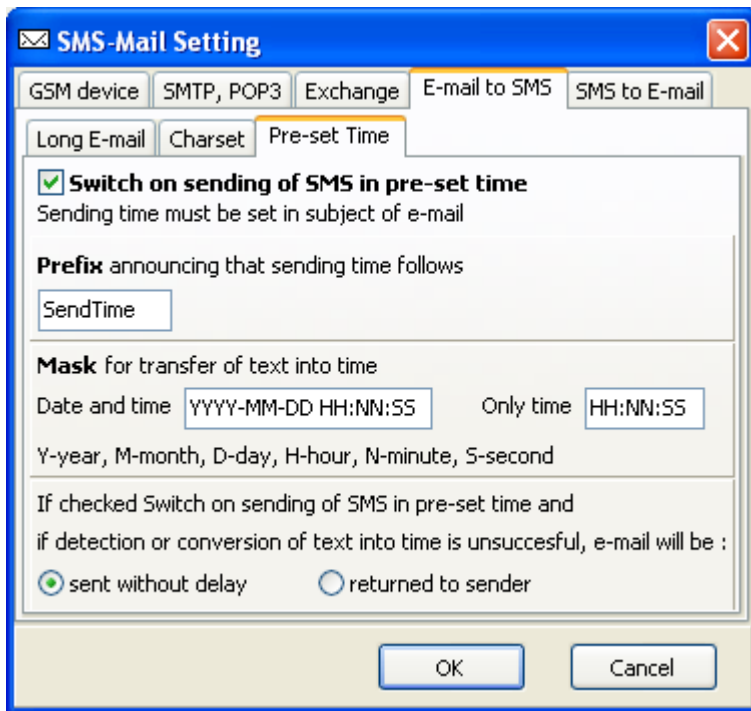


According to setting, the program can try to detect charset and to convert characters into similar ones without diacritical marks.

It can also return e-mail as undispatched or to rewrite the characters with „-“.

Preferably, a sender should write e-mail so that it was readable in mobile phone after transfer into SMS message.

E-mail must be sent as SMS in pre-set time

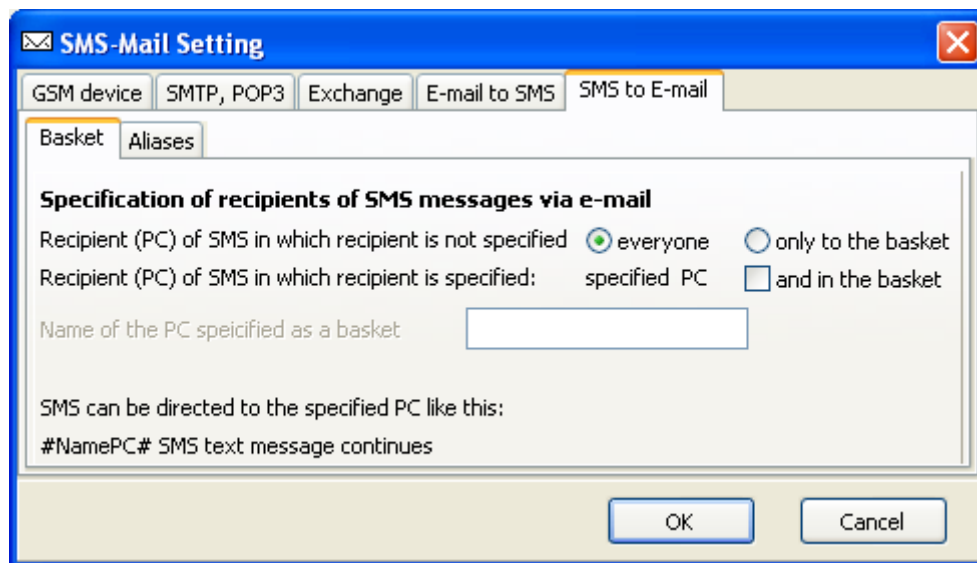


If this regime is switched on, it is possible to write information on time of SMS message sending to e-mail subject.

Reception of SMS messages by e-mail clients

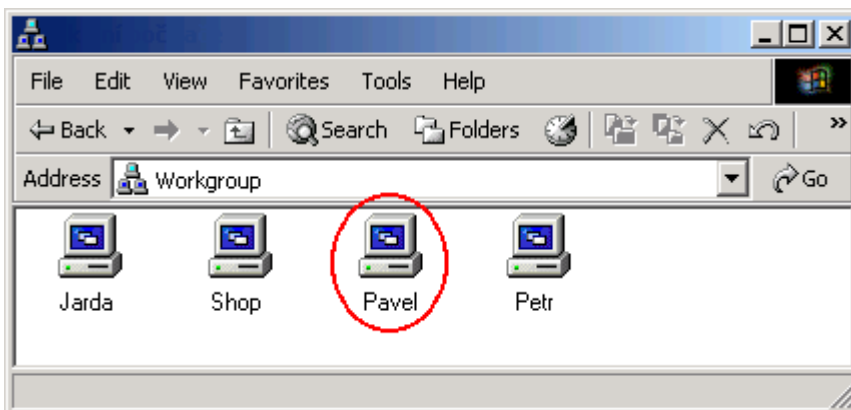
SMS message is routed to GSM gate according to telephone number of GSM gate by GSM operator. Therefore, it is necessary to specify to which POP3 clients of SMS_Mail program the received SMS messages will be released. Standard SMSs sent to GSM module are delivered to all PCs in local net that have relevant accounts created in program for work with e-mails.

Specification of recipients to whom SMS messages will be released



In basic setting, all SMS messages are released for all clients in local net that have accounts for work with program SMS_Mail created in e-mail client. If it is not desirable to release all messages for all clients, it is necessary to specify one PC „a basket“ that will take messages.

Sending of SMS messages selectively to a defined computer in the net

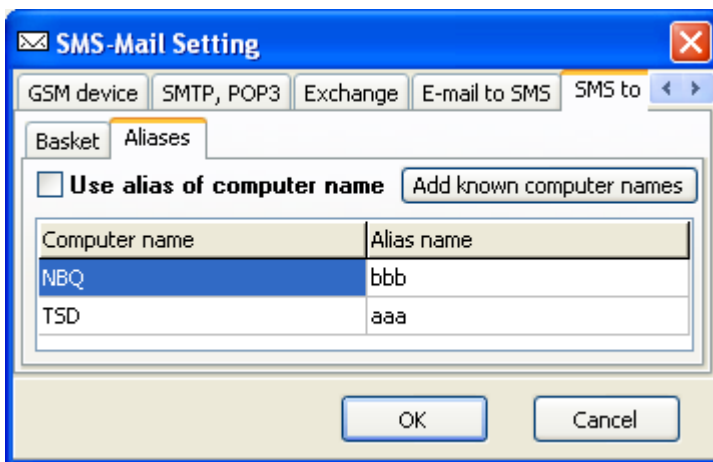


Standard SMSs sent to the number of first GSM module are delivered to all computers in the local net that have the particular account created in the program for e-mails (see above). If it is necessary to deliver the SMS selectively to the defined computer in the net, the computer name, under which the PC is shown in the local net, will be placed in the beginning

of the SMS message. The name must be entered between „#“ marks.

SMS for computer Pavel: #Pavel# Test SMS for Pavel. It is possible to give more names, separated by commas, between „#“ marks. Then SMS will be delivered only to these computers. For example: #Jarda,Pavel,Petr# Test SMS for Jarda, Pavel and Petr.



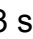




Aliases as substitution of PC names in local net



It is possible to use aliases, given in Aliases table, instead of computer names.

Messages without given name or alias of a computer can be sent to all PCs or only to one PC (To basket). Messages with given names can be sent to address and moreover to other PC - to basket. If a basket name is not filled in, the computer with running SMS-Mail program is regarded to be the basket

Evaluation of correct program functioning

- All servers of SMS-Mail program must be active for correct program functioning.
- The icon  must glimmer once at SMS server and letters in SMTP and POP3 texts must be displayed in a black color.
- After pressing of „Send/Recv“ in Outlook, colored icons  at POP3 server must glimmer once and the same event must happen in case of sending at SMTP server. Information about connected clients will appear in a status bar.
- After downloading of SMS messages from GSM gate, an icon  of POP3 server will change into an icon  and it will stay in this state even after downloading of messages by any client because messages are saved for other clients.
- After downloading of messages to SMTP server, the icon  will change itself into the icon . After transfer of messages to GSM gate the icon will return to the state .

Servers of SMS-Mail program are established as independent adaptive sequence automats. Therefore texts in status window can differ in dependence on system and collaborating programs states and do not need to be repeated regularly.

ALPHATECH TECHNOLOGIES s.r.o.

Jeremenkova 88
140 00 Praha 4
Czech Republic
VAT: CZ27577350

Company is registered in the Commercial Register administered by the Municipal
Court in Prague, Section C, Record 116886

Banking details:

Komerční banka, account No. 43-7671450207/0100
IBAN: CZ0801000000437671450207
SWIFT: KOMBCZPPXXX